



# HAND DRYER



## STELL'AIR AIR JET

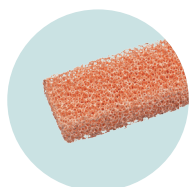


REF 8 11 963  
Stell'air  
automatic - gray  
alu  
UL<sup>1</sup>: 1



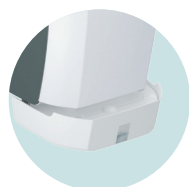
REF 8 11 962  
Stell'air  
automatic -  
white alu  
UL<sup>1</sup>: 1

+ REF 5 90 2014  
Copper bactericidal  
filter UL<sup>1</sup>: 1

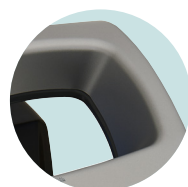


**HYGIENIC**  
COPPER BACTERICIDE FILTER AND INTEGRATED  
WATER TRAY, ANTIBACTERIAL SURFACE TREATMENT

+ REF 5 30 1719  
Drain kit  
UL<sup>1</sup>: 1



**EASY TO USE**  
LARGE OPENING AND  
LIGHTING OF THE DRYING  
ZONE



**VANDAL RESISTANT**  
ABS IK 10 COVER  
WIDERBROUKSFAHIG

1 Logistics unit (number of items per package)

ECO CONCEPTION MADE IN FRANCE

### PRODUCT S



**35%**

More economical  
than similar  
models



**73dB**

The quietest  
on the market



**100%**

Ergonomic with  
wide opening and  
lighting

### FEATURES

- Drying time: 10 to 15 seconds
- Frequency of use: High
- Noise level: 73dBA
- Anti-vandalism: ABS IK 10 cover
- Lighting of the drying zone
- Bactericidal copper filter included
- 1 L/qt water collection tray
- Rated power: 800 W  
(New version: -30%)
- Power supply: 220-240 V / 50Hz
- EC - Class II - IP44
- 2 finishes: white and metallic gray
- 3-year warranty
- Dim. : W.340 x H.531 x D.220 mm



Flashcode  
for video